



International Benchrest Shooters



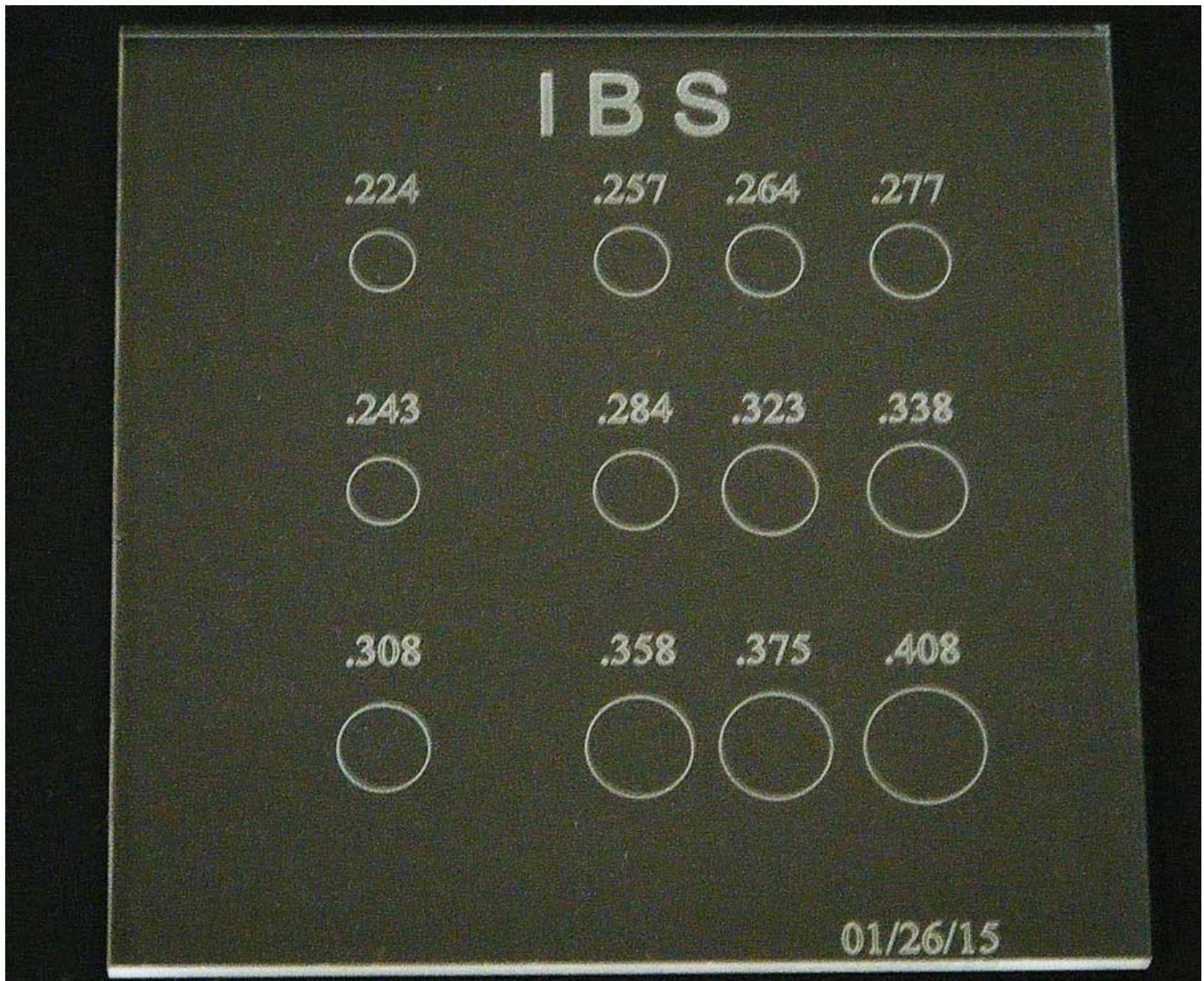
[Home](#) [About](#) [News](#) [Schedule](#) [Results/Rankings](#) [Records](#) [Ranges](#) [Join](#) [Photos](#) [Downloads](#)

New Scoring Reticule.

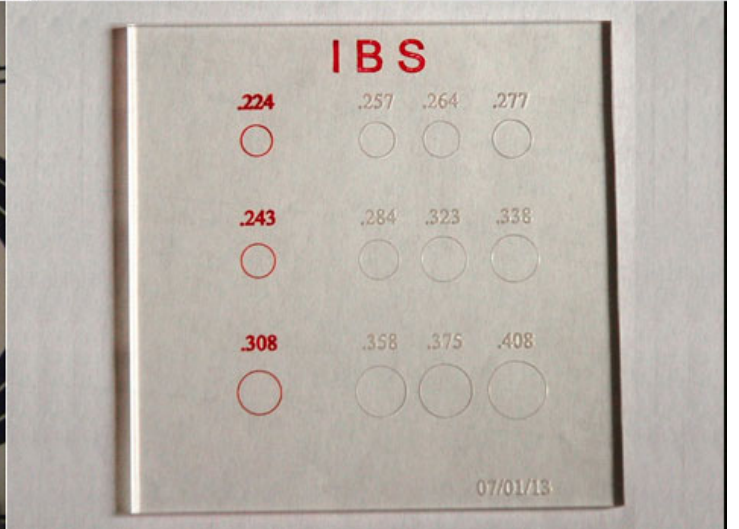
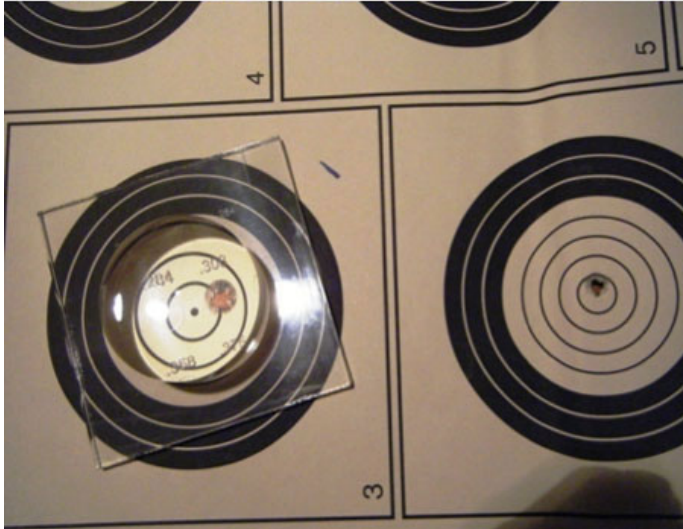
The reticle has two components, the plate which is reverse laser etched with 12 bullet diameters. They are: .224, .243, .257, .264, .277, .284, .308, .323, .338, .358, .375, and .408. The etched circles are in direct contact with the target. The 4X domed magnifier provides a clear visual image that aids in accurate scoring.

Sept 21, 2015 "Updated reticule plate"

A new material has been approved for the Score reticule plate. This material has white circles that are a lot brighter than the previous material and does not require the circles to be colored. Future reticule sales will be shipped with the new updated plate at the **current price of \$40**. Any **individual or club wishing to update to the new plate can do so for \$15.00**. The use of either previous reticule is still fully approved and this new plate is not mandantory.



New Plate



The new device is easier to use to get a true reading.

NO CLUB IS REQUIRED TO PURCHASE A NEW DEVICE

The current reticule remains fully approved and can continue to be used.

New Reticules can be ordered from Frank Danisienka, although not required it is hoped the low price will encourage clubs and individuals to acquire one.

The price of the reticle is \$40.00, shipping included within the USA.

If you have any questions you can contact Frank at: (603)249-6674 or by e-mail at frank30br@comcast.net

Send your payment to:

Frank Danisienka
P.O. Box 97
New Ipswich, NH 03071

FYI below is a copy of the instruction sheet for the new reticule.

Frank Danisienka, P.O. Box 97, New Ipswich, NH 03071

Target Scoring Device

Description:

This scoring system consists of a scribed plate and a 4X domed magnifier. There are twelve (12) bullet diameters etched on the underside of the plate. **It is outside edge of the circle that is the true diameter of the bullet.** In addition to determining how the hole should be scored, it may also prove useful for detailed examination of the hole for evidence of “doubles” where a target backer is not used.

Instructions for Use

1. Depending on the condition of the hole, it may be necessary to turn the target onto its face and fold the torn pieces of the target back toward the center of the hole.
2. Lay the target face up and place the plate on the target centering the proper size circle (bullet diameter) over the bullet hole.
3. At times the scribed circle will be larger than the bullet hole making the positioning of the scribed circle critical for accurate measurement.
4. Place the plate and magnifier on the target over the hole to be scored.
5. With the magnifier **remaining on the plate** and the scribed circle of the correct diameter **PERFECTLY CENTERED** over the bullet hole – score the target using the **OUTSIDE EDGE** of the scribed circle to determine the result.

When not in use place the scoring plate on the magnifier carton to keep it clean and away from abrasive or dirty surfaces.

Novus #2 fine scratch remover (2oz. container) can be used with a paper towel to remove fine scratches.